



Forklifts & Powered Industrial Truck Safety

OSHA REQUIREMENTS EXPLAINED

Our webinar will begin shortly...





icwGROUP
Insurance Companies

Forklifts & Powered Industrial Truck Safety

OSHA REQUIREMENTS EXPLAINED

Risk Management



TODAY'S PRESENTER

Terio G. Duran

Sr. Risk Management Consultant
ICW Group



TODAY'S TOPICS

- OSHA Powered Industrial Truck (PIT) Standard defined
- Classes of Powered Industrial Trucks
- Training Requirements
- Developing a Training Program
- Inspection Requirements
- Keeping Pedestrians Safe
- Safety Training Resources



Powered Industrial Truck Accident



Poll Question

How can we prevent similar forklift/PIT accidents in our workplace?

- a. Immediately discipline employees for not following PIT safe work practices
- b. Terminate employees on the spot for operating unsafely
- c. Regularly assess the workplace to identify and control potential PIT hazards
- d. Implement a PIT training program as required by OSHA standards
- e. Both c and d



Poll Question

How can we prevent similar forklift/PIT accidents in our workplace?

- c. Regularly assess the workplace to identify and control potential PIT hazards.
- d. Implement a PIT training program as required by OSHA standards.



PIT Statistics

- On average, **1 fatality every 3 days**
- **95,000** non-fatal injuries every year
- **25%** of all accidents are due to rollovers
- **36%** of related deaths are pedestrians
- **70%** of accidents could be prevented

Sources:

-Bureau of Labor Statistics

-OSHA



Powered Industrial Truck Defined



According to OSHA standard 1910.178, a powered industrial truck is defined as a fork truck, tractor, platform lift truck, motorized hand truck, and other specialized industrial trucks powered by electric motors or internal combustion engines.



PIT Standard 1910.178 Defined

- Implement PIT training program
- Specific to types of PITs
- Specific to working conditions encountered
- Evaluate operator's performance
- Certify that operator has been trained



Seven Classes of Powered Industrial Trucks



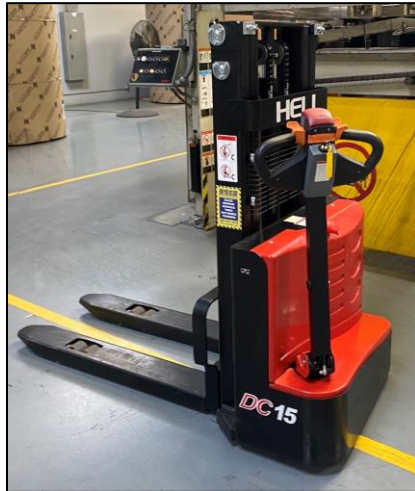
- Class I** – Electric Motor Rider Trucks (Cushion or Pneumatic)
- Class II** – Electric Motor Narrow Aisle Trucks
- Class III** – Electric Motor Hand Trucks or Hand/Rider Trucks
- Class IV** – Internal Combustion Engine Trucks (Cushion Tires)
- Class V** – Internal Combustion Engine Trucks (Pneumatic Tires)
- Class VI** – Electric and Internal Combustion Engine Tractors
- Class VII** – Rough Terrain Forklift Trucks



Common PITs Covered Under 1910.178



Propane Powered
Forklift - Pneumatic
Tires (Class V)



Electric Pallet Jacks
(Class III)



Electric Powered
Forklifts (Class I)



Order Pickers
(Class II)

Common PITs Covered Under 1910.178



Diesel Powered Forklift
(Class V)

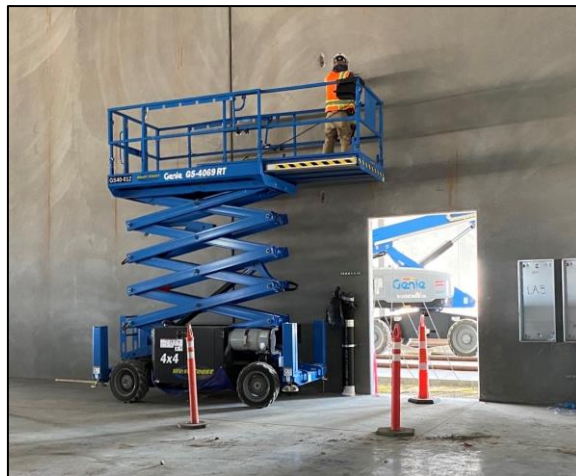


Rough Terrain Forklift
(Class VII)



Electric Rider Pallet Jack
(Class III)

Are these covered under 1910.178?



Employer Training Requirements

1. Ensure operator competency
2. Certify operators trained and evaluated
 - Based on OSHA Standard [1910.178](#)
3. Certification must include:
 - Name of operator
 - Date of safety training
 - Date of operator evaluation
 - Name and signature of person(s) conducting the training and evaluation



Employer Training Requirements



1. Evaluate operators every 3 years
2. Refresher training needed if ...
 - Operator is operating PIT unsafely
 - Accident or near-miss incident occurs
 - Operator is assigned different type of PIT
 - Changes in the workplace
 - Operator fails an evaluation



What Does Certification Mean?

Employer is certifying that each operator...

Has received required safety training

Has been evaluated

Has demonstrated competency



Training Requirements

Who can train and certify my forklift operators?

- Must have knowledge
- Must have training
- Must have experience



Training Requirements

Why is specific training required?

- Different work conditions and environments
- PITs have unique characteristics
- Each PIT has different hazards
- Modified or use attachments



Training Requirements

Who is required to comply?

- Employers with forklift operators
- Employers with pedestrians
- General contractors
- Vendors and visitors



Training Requirements

Who must be trained?

- Powered industrial truck operators
- New hires with prior certification?
- Occasional operator?
- Owner of business?



Developing a Training Program

What type of training format should be used?

- Combination of lecture, video, handouts
- Practical demonstration and exercises
- Exam to verify understanding & retention
- Operator evaluation (workplace specific)



What Subjects Must Be Covered?

- All operating instructions
- Similarities and differences to automobile
- Controls and instrumentation
- Steering and maneuvering
- Visibility (including restrictions due to loading)
- Fork and attachment adaptation
- Forklift capacity
- Forklift stability
- Forklift inspection and maintenance
- Refueling or charging, recharging batteries
- Operating limitations; and...
- Any other operating instructions

Truck-Related Topics

What Subjects Must Be Covered?

- Surface conditions
- Composition of probable loads
- Load stability
- Load manipulation, stacking and unstacking
- Pedestrian traffic
- Narrow aisles and other restricted places of operation
- Operating in hazardous locations
- Operating the truck on ramps and sloped surfaces
- Operating the vehicle in closed or poorly ventilated areas; and....
- Other unique or potentially hazardous environmental conditions that exist or may exist in the workplace

Workplace-Related Topics

Document Your Trainings!

- Maintain written certificates
- Maintain completed evaluation forms
- Maintain copy of completed exams
- Keep on file for 5 years

PIT Inspection Requirements



OSHA standard 1910.178(q)(7) requires that powered industrial trucks shall be examined before being placed in service and shall not be placed in service if the examination shows any condition adversely affecting the safety of the vehicle. Such examination shall be made at least daily. Where industrial trucks are used on a round-the-clock basis, they shall be examined after each shift. Defects when found shall be immediately reported and corrected.

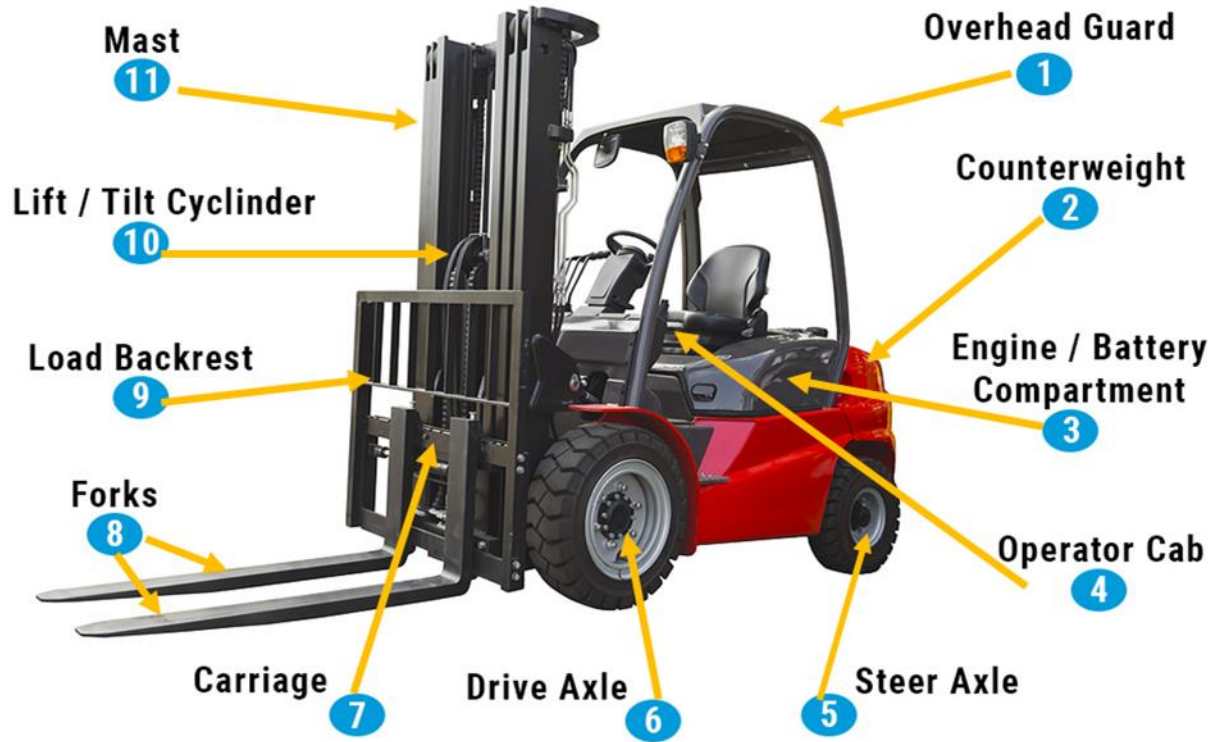
**OSHA
STANDARD
1910.178(Q)(7)**

PIT Inspection Requirements

- Conduct inspections daily, prior to using the equipment
- If using a round-the-clock basis, must be examined before each shift
- Document all corrective action items and maintenance work
- Maintain copies of work orders and repairs
- Develop a checklist specific to the lift

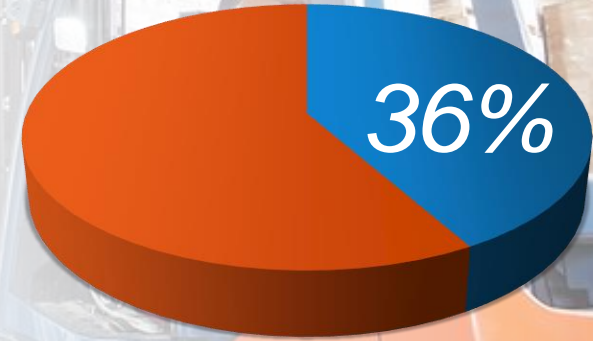


Common Forklift Components



Pedestrian Safety Requirements

- Operator training on pedestrian traffic areas
- Pedestrian safety training
- Identify pedestrian walkways and forklift pathways
- Use convex mirrors at blind intersections
- Use mirrors on forklifts



***36% of fatalities
are pedestrians***

Pedestrian Safety Requirements

- Retrofit forklifts with pedestrian warning lights
- Make sure forklifts have back up alarms
- Enforce use of horns blind intersections
- Use a spotter when driving with a restricted view
- Use forklift warning and caution signs



Safety Training Resources

- Safety *OnDemand*
 - Search *“Forklift Safety”* or *“Powered Industrial Trucks”*
- Train-the-trainer webinar
- Onsite train-the-trainer services
- Onsite forklift hazard assessment

icwgroup.com/safety

The screenshot shows the ICW Group website's Safety Resources page. The navigation menu includes Home, Claims, Payments, myResource, Safety, Fraud, HR Advice, and Contact. The Safety Resources section is highlighted in orange. Below the navigation, there is a featured article titled "Creating a Culture of Safety" with a photo of Brian Talley, a Valued ICW Group Policyholder at Talley Vineyards. The article text discusses the importance of safety and provides resources for creating and maintaining a safe work environment. A "QUESTION" box is also visible, containing the text "QUESTION about safety?" and a link to "Contact Safety and Risk Management".

On the Policyholder Center

icwgroup.com/safety

Find helpful checklists for your inspections on our Policyholder Center



The screenshot displays the ICW Group Policyholder Center website. At the top, there is a navigation bar with links for Home, Claims, Payments, myResource, Safety, Fraud, HR Advice, and Contact. The main header features a photo of Brian Talley, a Valued ICW Group Policyholder, and the title 'POLICYHOLDER CENTER' with a sub-heading 'Workers' Compensation'. Below this are three icons: 'Report a Claim', 'Make a Payment', and 'Log into myResource'. A dropdown menu shows 'California' as the selected state, with a link to 'Why select a state?'. A link for 'Back to Safety Webinars' is visible. The featured content is a webinar titled 'Forklift & Powered Industrial Truck Safety', categorized as an 'ON DEMAND WEBINAR'. The text describes the hazards of respiratory exposure and the impact on employees and businesses. A list of topics to be covered includes OSHA PIT Standard Defined, Operator training requirements, Keeping pedestrians safe, and Training program development. A video player thumbnail at the bottom shows a forklift operator in a warehouse setting, with the text 'Forklift & Powered Industrial Truck Safety' and 'OSHA Requirements Explained' overlaid.

Home Claims Payments myResource Safety Fraud HR Advice Contact

POLICYHOLDER CENTER
Workers' Compensation

Report a Claim Make a Payment Log into myResource

Valued ICW Group Policyholder
Brian Talley
Talley Vineyards

You're viewing info for **California** Why select a state?

Back to Safety Webinars

Forklift & Powered Industrial Truck Safety

ON DEMAND WEBINAR

Any exposure to respiratory hazards can have a catastrophic impact. Employees can experience significant health effects, while employers face OSHA fines, business interruption, and costly claims.

Watch our next safety training webinar led by our technical specialist Mark Yeck. He will walk you through respiratory protection requirements and regulatory updates and the impact respiratory hazards can have on your employees and your business.

In this webinar, you'll learn:

- OSHA PIT Standard Defined
- Operator training requirements
- Keeping pedestrians safe
- Training program development

Forklift & Powered Industrial Truck Safety

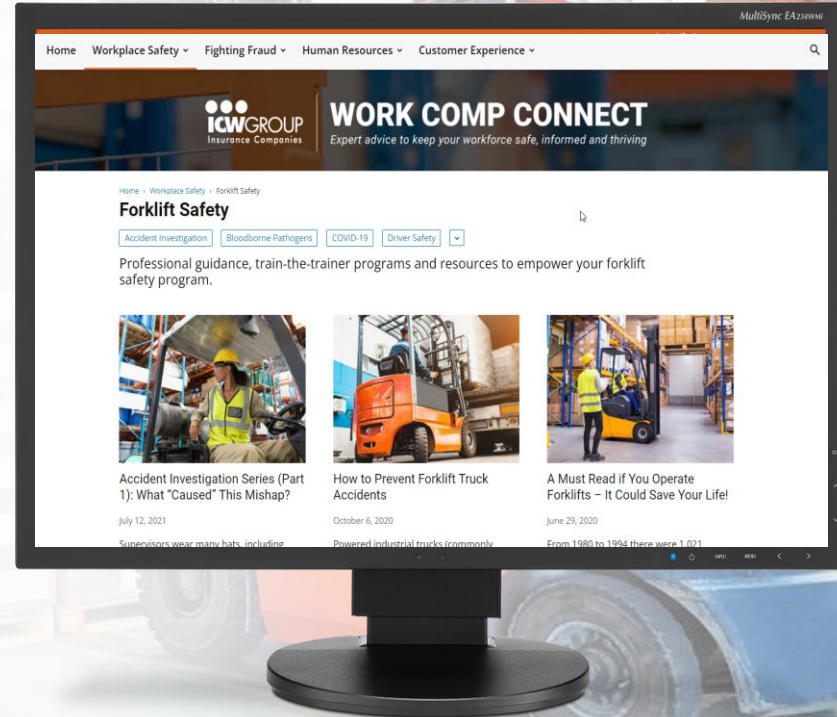
OSHA Requirements Explained

On the Policyholder Center



Blog.icwgroup.com

- Find more on forklift safety
- Helpful articles on numerous safety topics, work comp fraud and HR advice
- Written by ICW Group experts



Quote



It's not enough to do your best; you must know what to do, and then do your best.
-W. Edwards Deming

QUESTIONS?





Thank you!

Terio G. Duran

1.858.436.4828

tduran@icwgroup.com

